

Folie 1

Inhaltsfolie

- Wirbelsäule
Allgemein und Anatomie

11.08.2006 U. Albig 1

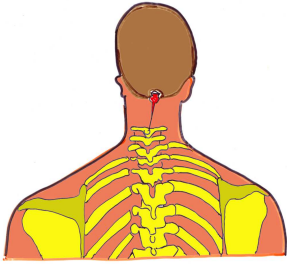
Folie 2

**Wirbelsäule
Allgemein und Anatomie**

11.08.2006 U. Albig 2

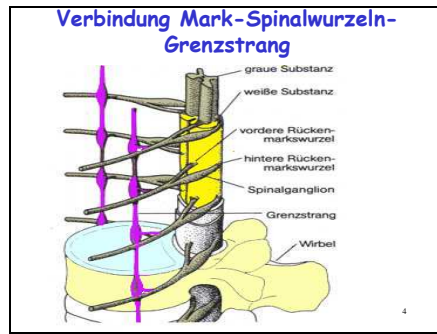
Folie 3

HWS-Inj. an DF

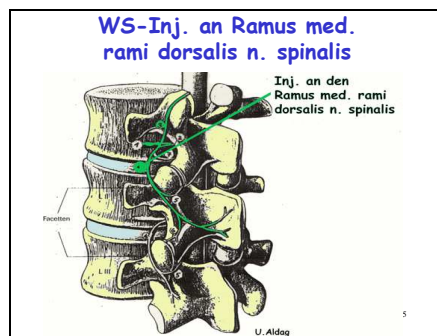


3

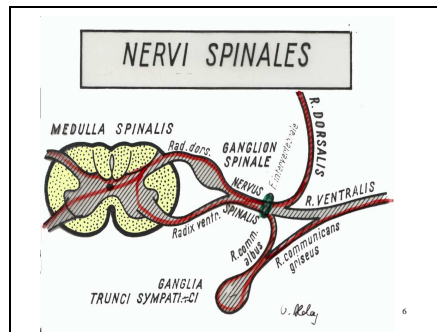
Folie 4



Folie 5



Folie 6



Folie 7

Inhaltsfolie

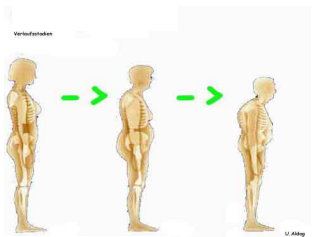
- Körperhaltung bei Osteoporose

11.08.2006 U. Alldag 7

Folie 8

Osteoporose

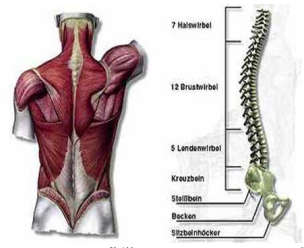
Verliefenheitsstadien



U. Alldag 8

Folie 9

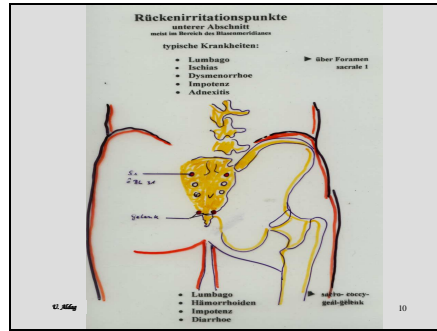
seitliches Skelett



7 Halswirbel
12 Brustwirbel
5 Lendenwirbel
Kreuzbein
Steißbein
Becken
Sitzbeinhöcker

11.08.2006 U. Alldag 9

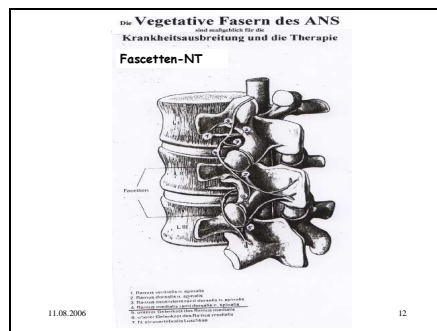
Folie 10



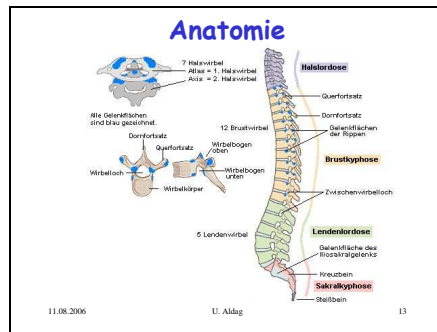
Folie 11



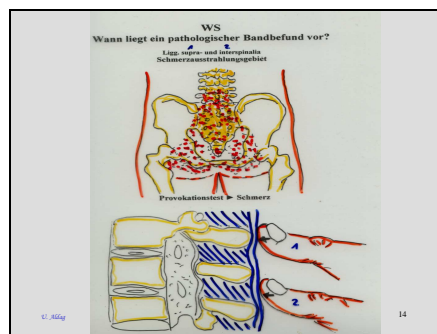
Folie 12



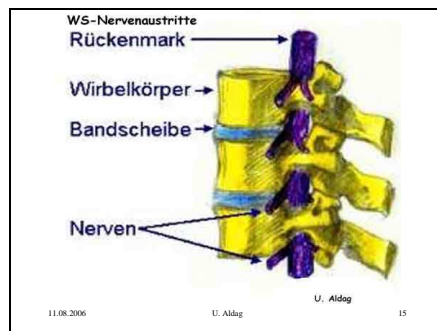
Folie 13



Folie 14



Folie 15



Folie 16

Becken Bänder Nerven

11.08.2006 U. Albig 16

Folie 17

**AUTONOMES NERVENSYSTEM
UNTER BAUCH / BECKEN
(GEFÄßORIENTIERT)**

gefci cke

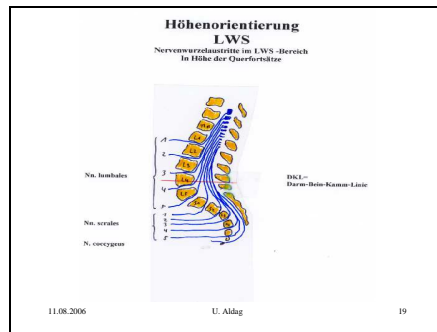
11.08.2006 17

Folie 18

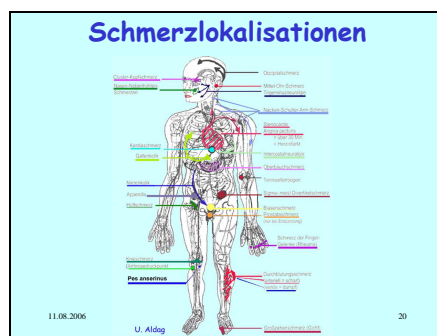
Bandinsuff. LBH

11.08.2006 U. Albig 18

Folie 19



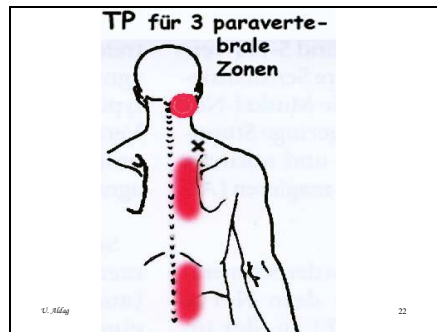
Folie 20



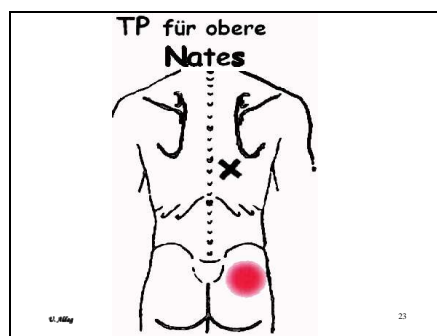
Folie 21



Folie 22



Folie 23



Folie 24

Rücken TPs im Bereich des Blasenmeridians

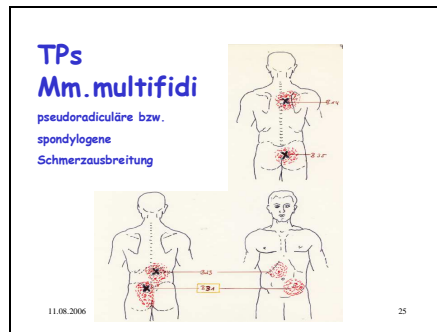
- 2 23 Lenden 4P L4/5 (Auge, Mann-urgen-funk., chron. Blasen-Schle.)
- 2 40 Lenden 4P L5/S1 (Bauchschmerz, Blasenmeridian, Impotenz, Nervenstörungen)
- 2 41 Lenden 4P L5/S1 2P unter 2P (Blasenmeridian, Impotenz, Blasen/Schmerz)
- 3 42 Lenden 4P L5/S1 (Bauchschmerz, Blasen/Schmerz, Blasenmeridian, Impotenz, Blasen/Schmerz)
- 2 44 Lenden 4P L5/S1 (Bauchschmerz, Blasen/Schmerz, Blasenmeridian, Impotenz, Blasen/Schmerz)

3 34 (für Frauen) 2P 2 (Lumbago, Blasen, Blasenmeridian, Impotenz, Blasen/Schmerz)

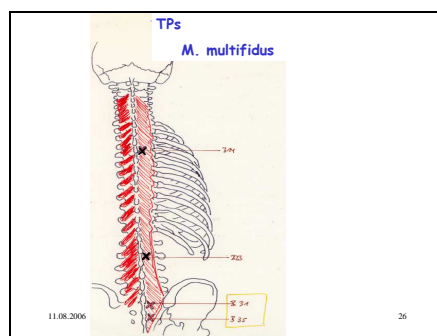
3 27 (für Frauen) 2P 2 (Lumbago, Blasen, Blasenmeridian, Impotenz, Blasen/Schmerz)

11.08.2006 24

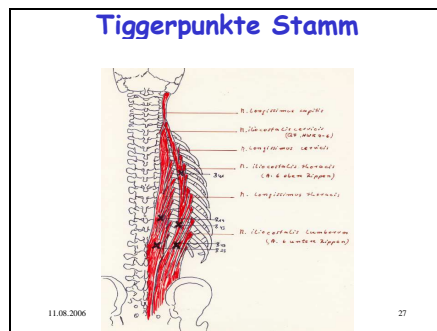
Folie 25



Folie 26



Folie 27



Folie 28

